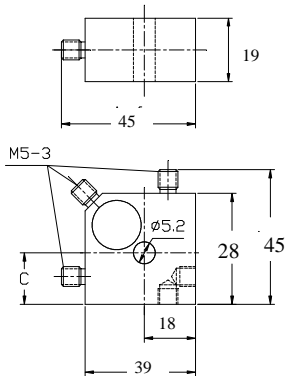




Charge Output Tri-Axial Measurement Accelerometer

Model NTI-26500



DYNAMIC

Sensitivity	-----	100 pC/g
Measurement Range	-----	± 800 g peak
Amplitude Nonlinearity	-----	1 %
Frequency Range ± 5%	-----	0.5 – 1 kHz
± 10%	-----	0.3 – 1.5 kHz
Resonance Frequency	-----	≥ 6 kHz
Transverse Sensitivity	-----	≤ 5 %

ELECTRICAL

Capacitance	-----	850 pF
Sensing Insulation Resistance	-----	≥ 1x10 ¹¹ Ω

ENVIRONMENT

Maximum Vibration	-----	1500 g peak
Maximum Shock	-----	1800 g peak
Operation Temperature (Domestic Ceramic)	---	-40 to 320°F / -40 to 160°C
(Import Ceramic)	-----	-40 to 482°F / -40 to 250°C
Temperature Response	-----	See Graph
Sealing	-----	Welding
Base Strain Sensitivity	-----	0.0008 g/μ strain

PHYSICAL

Sensing Element	-----	Ceramic / Shear
Housing Material	-----	Stainless Steel
Output Connector / Position	-----	M5 / Side
Mounting Thread	-----	M5 Through Hole
Weight	-----	200 gram

ACCESORIES SUPPLIED

- Ø 2 mm x 1 m Low Noise Cable with M5 / M5 Connectors
- M5 Through Hole Mounting Screw
- Calibration Certificate

Note: Output connector and mounting thread can be changed to English 10-32 thread by request.

