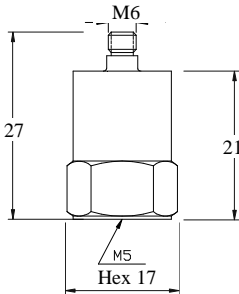




Charge Output Economic Version Accelerometer

Model NTI-23110



DYNAMIC

Sensitivity	-----	10 pC/g
Measurement Range	-----	± 2000 g peak
Amplitude Nonlinearity	-----	1 %
Frequency Range ± 10%	-----	0.5 – 7 kHz
Resonance Frequency	-----	25 kHz
Transverse Sensitivity	-----	≤ 5 %

ELECTRICAL

Capacitance	-----	700 pF
Sensing Insulation Resistance	-----	≥ 1x10 ¹¹ Ω
Mounting Ground Insulation Resistance	-----	≥ 1x10 ⁸ Ω

ENVIRONMENT

Maximum Vibration	-----	3000 g peak
Maximum Shock	-----	5000 g peak
Operation Temperature (Domestic Ceramic)	---	-40 to 320°F / -40 to 160°C
Temperature Response	-----	See Graph
Sealing	-----	Epoxy
Base Strain Sensitivity	-----	0.001 g/μ strain

PHYSICAL

Sensing Element	-----	Ceramic / Shear
Housing Material	-----	Stainless Steel
Output Connector / Position	-----	M6 / Top
Mounting Thread	-----	M5
Weight	-----	23 gram

ACCESORIES SUPPLIED

- Ø 3 mm x 1 m Low Noise Cable with M6 / M5 Connectors
- M5-M5 Mounting Stud
- Calibration Certificate

Note: Output connector and mounting thread can be changed to English 10-32 thread by request.

