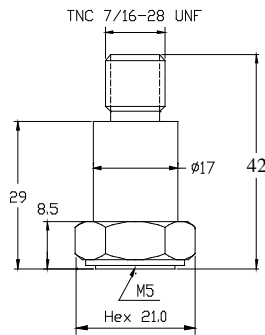




## IEPE Industrial Application – TNC Output / Insulation Base

### Model NTI-14103



#### DYNAMIC

|                            |       |                 |
|----------------------------|-------|-----------------|
| Sensitivity $\pm 10\%$     | ----- | 100 mV/g        |
| Measurement Range          | ----- | $\pm 50$ g peak |
| Broadband Resolution       | ----- | 0.0001 g rms    |
| Amplitude Nonlinearity     | ----- | 1 %             |
| Frequency Range $\pm 10\%$ | ----- | 0.3 – 7 kHz     |
| Resonance Frequency        | ----- | 22 kHz          |
| Transverse Sensitivity     | ----- | $\leq 5$ %      |

#### ELECTRICAL

|                                       |       |                                     |
|---------------------------------------|-------|-------------------------------------|
| Excitation Voltage                    | ----- | 18 - 30 VDC                         |
| Constant Current Excitation           | ----- | 2 – 20 mA                           |
| Output Impedance                      | ----- | $\leq 100 \Omega$                   |
| Output Bias Voltage                   | ----- | 12 VDC                              |
| Spectral Noise (10 Hz)                | ----- | 12 $\mu\text{g} / \sqrt{\text{Hz}}$ |
| (100 Hz)                              | ----- | 4 $\mu\text{g} / \sqrt{\text{Hz}}$  |
| (1000 Hz)                             | ----- | 3 $\mu\text{g} / \sqrt{\text{Hz}}$  |
| Mounting Ground Insulation Resistance | ----- | $\geq 1 \times 10^8 \Omega$         |

#### ENVIRONMENT

|                         |       |                             |
|-------------------------|-------|-----------------------------|
| Maximum Vibration       | ----- | 400 g peak                  |
| Maximum Shock           | ----- | 1000 g peak                 |
| Operation Temperature   | ----- | -40 to 248°F / -40 to 120°C |
| Sealing                 | ----- | Epoxy                       |
| Base Strain Sensitivity | ----- | 0.001 g/ $\mu$ strain       |

#### PHYSICAL

|                             |       |                 |
|-----------------------------|-------|-----------------|
| Sensing Element             | ----- | Ceramic / Shear |
| Housing Material            | ----- | Stainless Steel |
| Output Connector / Position | ----- | TNC / Top       |
| Mounting Thread             | ----- | M5              |
| Weight                      | ----- | 46 gram         |

#### ACCESSORIES SUPPLIED

- Ø 4.5 mm x 1 m Coaxial Cable with TNC / BNC Connectors
- M5-M5 Mounting Stud
- Calibration Certificate

Note: Mounting thread can be changed to English 10-32 thread by request.

