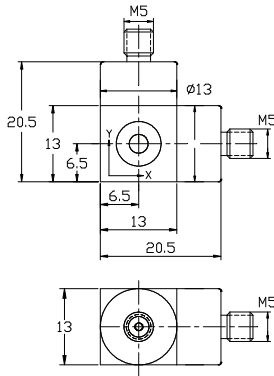




**IEPE Tri-Axial Measurement Accelerometer**

**Model NTI-14504**



**DYNAMIC**

Sensitivity $\pm 5\%$	-----	100 mV/g
Measurement Range	-----	$\pm 50$ g peak
Broadband Resolution	-----	0.0001 g rms
Amplitude Nonlinearity	-----	1 %
Frequency Range $\pm 5\%$	-----	0.5 – 5 kHz
$\pm 10\%$	-----	0.3 – 6 kHz
Resonance Frequency	-----	22 kHz
Transverse Sensitivity	-----	$\leq 5\%$

**ELECTRICAL**

Excitation Voltage	-----	18 - 30 VDC
Constant Current Excitation	-----	2 – 20 mA
Output Impedance	-----	$\leq 100 \Omega$
Output Bias Voltage	-----	12 VDC
Spectral Noise (10 Hz)	-----	12 $\mu\text{g} / \sqrt{\text{Hz}}$
(100 Hz)	-----	4 $\mu\text{g} / \sqrt{\text{Hz}}$
(1000 Hz)	-----	3 $\mu\text{g} / \sqrt{\text{Hz}}$

**ENVIRONMENT**

Maximum Vibration	-----	400 g peak
Maximum Shock	-----	1000 g peak
Operation Temperature	-----	-40 to 248°F / -40 to 120°C
Sealing	-----	Welding
Base Strain Sensitivity	-----	0.0008 g/ $\mu$ strain

**PHYSICAL**

Sensing Element	-----	Ceramic / Shear
Housing Material	-----	Stainless Steel
Output Connector / Position	-----	M5 / Side
Mounting Thread	-----	M5 Through Hole
Weight	-----	28 gram

**ACCESORIES SUPPLIED**

- Ø 2 mm x 1 m Low Noise Cable with M5 - BNC Connectors
- M5 Through Hole Mounting Screw
- Calibration Certificate

Note: Output connector and mounting screw can be changed to English 10-32 thread by request.

