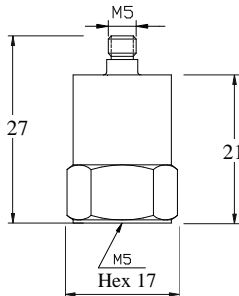




## IEPE Economic Version Accelerometer

### Model NTI-13108



#### DYNAMIC

Sensitivity $\pm 10\%$	-----	50 mV/g
Measurement Range	-----	$\pm 100$ g peak
Broadband Resolution	-----	0.0002 g rms
Amplitude Nonlinearity	-----	1 %
Frequency Range $\pm 10\%$	-----	0.5 – 10 kHz
Resonance Frequency	-----	30 kHz
Transverse Sensitivity	-----	$\leq 5$ %

#### ELECTRICAL

Excitation Voltage	-----	18 - 30 VDC
Constant Current Excitation	-----	2 – 20 mA
Output Impedance	-----	$\leq 100 \Omega$
Output Bias Voltage	-----	12 VDC
Spectral Noise (10 Hz)	-----	24 $\mu\text{g}/\sqrt{\text{Hz}}$
(100 Hz)	-----	8 $\mu\text{g}/\sqrt{\text{Hz}}$
(1000 Hz)	-----	6 $\mu\text{g}/\sqrt{\text{Hz}}$
Mounting Ground Insulation Resistance	-----	NO

#### ENVIRONMENT

Maximum Vibration	-----	800 g peak
Maximum Shock	-----	2000 g peak
Operation Temperature	-----	-40 to 248°F / -40 to 120°C
Sealing	-----	Epoxy
Base Strain Sensitivity	-----	0.0008 g/ $\mu$ strain

#### PHYSICAL

Sensing Element	-----	Ceramic / Shear
Housing Material	-----	Stainless Steel
Output Connector / Position	-----	M5 / Top
Mounting Thread	-----	M5
Weight	-----	23 gram

#### ACCESORIES SUPPLIED

- Ø 2 mm x 1 m Low Noise Cable with M5 / BNC Connectors
- M5-M5 Mounting Stud
- Calibration Certificate

Note: Output connector and mounting thread can be changed to English 10-32 thread by request.

