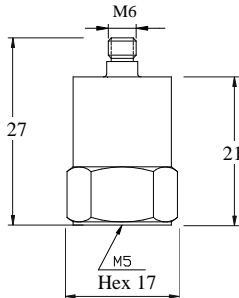




IEPE Economic Version Accelerometer – M6 Output

Model NTI-13111



DYNAMIC

| | | |
|----------------------------|-------|------------------|
| Sensitivity $\pm 10\%$ | ----- | 50 mV/g |
| Measurement Range | ----- | ± 100 g peak |
| Broadband Resolution | ----- | 0.0002 g rms |
| Amplitude Nonlinearity | ----- | 1 % |
| Frequency Range $\pm 10\%$ | ----- | 0.5 – 10 kHz |
| Resonance Frequency | ----- | 30 kHz |
| Transverse Sensitivity | ----- | ≤ 5 % |

ELECTRICAL

| | | |
|---------------------------------------|-------|-------------------------------------|
| Excitation Voltage | ----- | 18 - 30 VDC |
| Constant Current Excitation | ----- | 2 – 20 mA |
| Output Impedance | ----- | $\leq 100 \Omega$ |
| Output Bias Voltage | ----- | 12 VDC |
| Spectral Noise (10 Hz) | ----- | 24 $\mu\text{g} / \sqrt{\text{Hz}}$ |
| (100 Hz) | ----- | 8 $\mu\text{g} / \sqrt{\text{Hz}}$ |
| (1000 Hz) | ----- | 6 $\mu\text{g} / \sqrt{\text{Hz}}$ |
| Mounting Ground Insulation Resistance | ----- | NO |

ENVIRONMENT

| | | |
|-------------------------|-------|-----------------------------|
| Maximum Vibration | ----- | 800 g peak |
| Maximum Shock | ----- | 2000 g peak |
| Operation Temperature | ----- | -40 to 248°F / -40 to 120°C |
| Sealing | ----- | Epoxy |
| Base Strain Sensitivity | ----- | 0.0008 g/ μ strain |

PHYSICAL

| | | |
|-----------------------------|-------|-----------------|
| Sensing Element | ----- | Ceramic / Shear |
| Housing Material | ----- | Stainless Steel |
| Output Connector / Position | ----- | M6 / Top |
| Mounting Thread | ----- | M5 |
| Weight | ----- | 23 gram |

ACCESORIES SUPPLIED

- Ø 3 mm x 1 m Low Noise Cable with M6 / BNC Connectors
- M5-M5 Mounting Stud
- Calibration Certificate

Note: Mounting thread can be changed to English 10-32 thread by request.

