

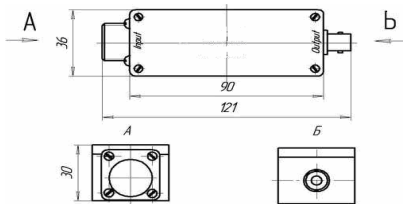


## Differential Charge Amplifier NTIP5001



Parameter	Unit	NTIP5001
灵敏度	mV/pC	1; 10 <sup>*1</sup> ; 0.1 <sup>*1</sup>
Input charge range <sup>*2</sup> .....	pC	5 000; 500; 50 000
Sensitivity deviation.....	%	< 1
(over temperature range).....	°C	(- 40...+ 85)
Output resistance.....	Ohm	< 500
Load capacitance on an input.....	pF	10 ... 10 000
Frequency range at the level - 3 dB.....	Hz	1 ... 20 000
Max output voltage (at the distortion factor < 5 %)	V	± 4
Load resistance.....	kOhm	> 5
Noise.....	pC/pF	< 5 • 10 <sup>-6</sup>
Constant output voltage level.....	V	11 ... 13
Supply voltage.....	V	+(18...30)
Supply current.....	mA	4.7 ... 20
Weight.....	gram	100

### General view of VTIP5001



### Electrical circuit

