

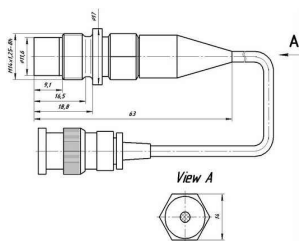


Dynamic Pressure Transducer with Built-In  
Electronics NTIPS2001

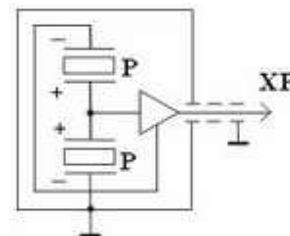


Parameter	Unit	NTIPS2001
Sensitivity ( $\pm 20\%$ ).....	mV/bar	200
Measured range.....	bar	0.1...50
Resonance frequency.....	kHz	> 120
Nonlinearity.....	-	<2%(from full scale)
Acceleration sensitivity.....	bar/g <sup>*1</sup>	< 0.001 5
Operating temperature range.....	° C	- 40...+ 125
Polarity.....	-	positive
Noise level, RMS (1 Hz ... 40 kHz).....	bar	$0.8 \cdot 10^{-4}$
Output resistance.....	ohm	< 500
Supply voltage.....	V	+ (15...30)
Supply current.....	mA	2...20
Constant output voltage level.....	V	8...11
Housing material.....	-	Stainless steel
Membrane material.....	-	Stainless steel
Built-in cable length.....	m	2 <sup>*2</sup>
Connector type.....	-	BNC
Weight (without cable).....	gram	40

General view of  
NTIPS2001



Electrical circuit of  
NTIPS2001



\*1 -  $1g = 9.807 \text{ m} \cdot \text{s}^{-2}$  or  $10 \text{ m} \cdot \text{s}^{-2} = 1.02 \text{ g}$ ;

\*2 - to be determined when making out an order.