

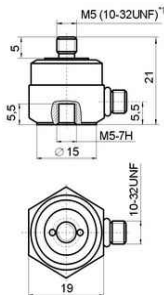


## Force Transducers NTIAC20, NTIAC21, NTIAC22, NTIAC23

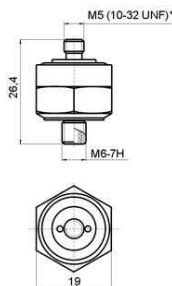


Parameter	Unit	NTIAC20	NTIAC21	NTIAC22	NTIAC23
Charge sensitivity (nominal value).....	pC/N	2	2	4	4
Relative transverse sensitivity.....	%	< 5	< 5	< 3	< 5
Sensitivity to temperature change.....	%/°C	< 0.05	< 0.05	< 0.1	< 0.05
Operating temperature range.....	°C	-60...+200	-60...+200	-60...+150	-60...+200
Strain sensitivity.....	N • m/μm	< 0.05	< 0.05	< 0.1	< 0.03
Capacitance.....	pF	20...35	20...35	200...350	10...14
Insulation resistance....	Mohm	> 1 000	> 1 000	> 1 000	> 1 000
Force range.....	N		-1000 ...+5000		
Resonance frequency.....	kHz	> 20	> 20	100	> 25
Effective inertial mass - on piezoelement					
- at the top of piezoelement.....	gram	5 (3) 17 (10)	5 (3) 17 (10)	0.3 (0,2) 1.3 (0.8)	5 17
Housing material.....	-	stainless steel (titanium)*1	stainless steel (titanium)*1	stainless steel (titanium)*1	stainless steel
Built-in cable length....	m	-	-	2*1	-
Weight.....	gram	23 (14)	23 (14)	1.6 (1)	25

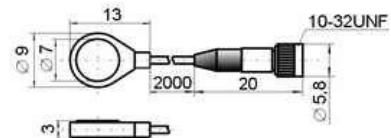
General view of NTIAC20, NTIAC23



General view of NTIAC21

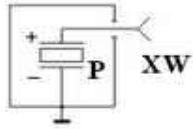


General view of NTIAC22

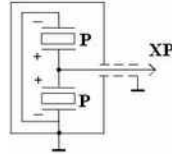




Electrical  
circuit of  
NTIAC20, NTIAC21



Electrical  
circuit of  
NTIAC22



Electrical  
circuit of  
NTIAC23

