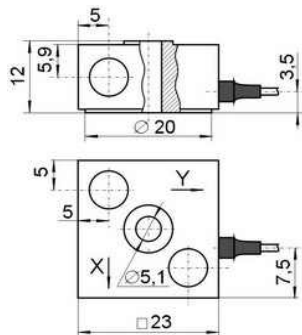




Two-Axis Vibration Transducer with Built-In Electronics NTIP2028

Parameter	Unit	NTIP2028
Axial sensitivity ($\pm 10\%$).....	mV/g ^{*1}	10
Relative transverse sensitivity.....	%	< 5
Amplitude range.....	g ^{*1}	± 500
Max. shock limit (peak value).....	g ^{*1}	± 500
Operating temperature range.....	° C	- 40...+ 125
Frequency range (ripple ± 1 dB).....	Hz	0.5...12 000
Self-resonant frequency in attached condition.....	kHz	> 35
Noise level, RMS (1 Hz ... 10 kHz).....	g ^{*1}	< 0.000 5
Output resistance.....	Ohm	< 500
Voltage power.....	V	+ (15...30)
Current power.....	mA	2...20
Constant output voltage level.....	V	8...11
Turn-on time.....	s	4
Design.....	-	Shear
Bottom insulation.....	-	no
Built-in cable length.....	m	2
Connector type.....	-	2×BNC (2×10-32) ^{*2}
Housing material.....	-	titanium alloy
Weight (without connector and cable).....	gram	34

General view of NTIP2028



Electrical circuit

