



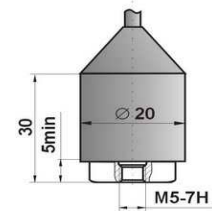
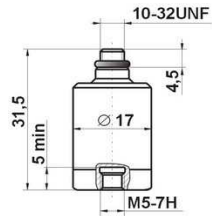
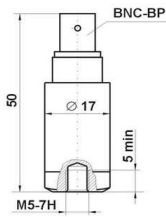
General Purpose Vibration Transducers with
Built-In Electronics NTIP98-30, NTIP98-100,
NTIP98-100-3.3, NTIP98-100-5, NTIP98-500



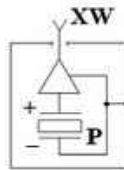
| Parameter | Unit | NTIP98-30 ^{*3} (NTIP98-30-01, NTIP98-30-02) | NTIP98-100 ^{*3} (NTIP98-100-01, NTIP98-100-02) | NTIP98-100-3.3 (NTIP98-100-3.3-01, NTIP98-100-3.3-02) | NTIP98-100-5 (NTIP98-100-5-01, NTIP98-100-5-02) | NTIP98-500 ^{*3} (NTIP98-500-01, NTIP98-500-02) |
|---|--------------------|--|---|---|---|---|
| Axial sensitivity (± 10%)..... | mV/g ^{*1} | 30 | 100 | 100 | 100 | 500 |
| Relative transverse sensitivity..... | % | < 5 | < 5 | < 5 | < 5 | < 5 |
| Amplitude range..... | g ^{*1} | ± 160 | ± 50 | ± 7 | ± 10 | ± 10 |
| Max. shock limit (peak value)..... | g ^{*1} | ±1500 | ±1000 | ±1000 | ±1000 | ±1000 |
| Operating temperature range..... | ° C | -40...+125 | -40...+125 | -40...+85 | -40...+85 | -40...+125 |
| Frequency range (ripple±1dB)..... | Hz | | | 0.5...12 000 | | |
| Self-resonant frequency in attached condition... | kHz | > 40 | > 40 | > 40 | > 40 | > 40 |
| Noise level,RMS (1 Hz ... 10kHz)..... | g ^{*1} | < 0.000 3 | < 0.000 2 | < 0.000 3 | < 0.000 3 | < 0.000 2 |
| Output resistance..... | Ohm | < 500 | < 500 | < 500 | < 200 | < 500 |
| Voltage power..... | V | +(15...30) | +(18...30) | +(3.3±5%) | + 5 | +(18...30) |
| Current power..... | mA | 2...20 | 2...20 | < 1 | 2 | 2...20 |
| Constant output voltage level..... | V | 8...11 | 10...13 | 2...2.5 | 2.5...3.5 | 10...13 |
| Design..... | - | Shear | Shear | Shear | Shear | Shear |
| Bottom insulation... | - | no | no | no | no | no |
| Connector type..... | - | 10-32 (BNC) ^{*2} | 10-32 (BNC) ^{*2} | 10-32 (BNC) ^{*2} | 10-32 (BNC) ^{*2} | 10-32 (BNC) ^{*2} |
| Housing material... | - | | | stainless steel | | |
| Weight(without connector and cable)..... | gram | 40 (25) ^{*2} | 40 (25) ^{*2} | 40 (25) ^{*2} | 40 (25) ^{*2} | 40 (25) ^{*2} |



General view of NTIP98 General view of NTIP98-01 General view of NTIP98-02



The typical electric circuit



The circuit of connection to a data-acquisition equipment

