

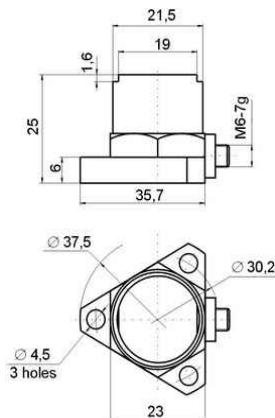


## Industrial Vibration Transducers with Built-In Electronics NTIP68

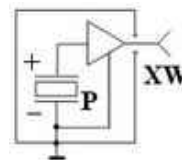


Parameter	Unit	NTIP68
Axial sensitivity ( $\pm 10\%$ ).....	mV/g <sup>*1</sup>	80
Relative transverse sensitivity .....	%	< 5
Amplitude range.....	g <sup>*1</sup>	$\pm 60$
Max. shock limit (peak value).....	g <sup>*1</sup>	$\pm 500$
Operating temperature range.....	° C	-40...+ 125
Frequency range (ripple $\pm 1$ dB).....	Hz	0.5...8 000
Self-resonant frequency in attached condition.kHz		> 25
Noise level, RMS (1 Hz ... 10 kHz).....	g <sup>*1</sup>	< 0.000 3
Output resistance.....	Ohm	< 500
Voltage power.....	V	+(18...30)
Current power.....	mA	2...20
Constant output voltage level.....	V	11...13
Design.....	-	compressive
Bottom insulation.....	-	no
Connector type.....	-	CP50-267
Housing material.....	-	stainless steel
Weight (without connector and cable).....	gram	65

### General view of NTIP68



### Electrical circuit



The circuit of connection to a  
data-acquisition equipment

