

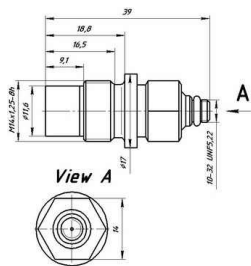


Dynamic Pressure Transducers NTIPS01,  
NTIPS01-01

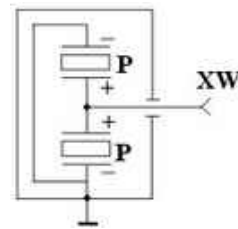


Parameter	Unit	NTIPS01	NTIPS01-01 <sup>*3</sup>
Sensitivity ( $\pm 20\%$ ).....	pC/bar		20
Measured range.....	bar	0.1...250	
Resonance frequency.....	kHz	> 120	
Nonlinearity.....	-	< 2 % (from full scale)	
Acceleration sensitivity....	bar/g <sup>*1</sup>	< 0.001 5	
Operating temperature range.....	$^{\circ}\text{C}$	- 50...+ 200	
Polarity.....	-	positive	
Capacitance.....	pF	7...11	
Insulation resistance.....	Ohm	$\geq 5^9 \cdot 10$	
Sensing element.....	-	quartz	
Housing material.....	-	Stainless steel	
Membrane material.....	-	Stainless steel	
Built-in cable length.....	m	-	2 <sup>*2</sup>
Connector type.....	-	10-32UNF (BNC) <sup>*2</sup>	
Weight (without cable).....	gram	35	

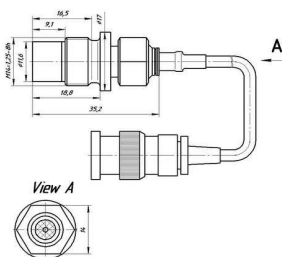
General view of NTIPS01



Electrical circuit of NTIPS01



General view of NTIPS01-01



Electrical circuit of NTIPS01-01

