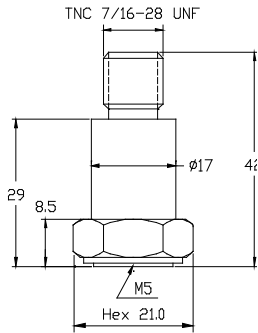




Charge Output - TNC Top Connector / Insulation Base

Model NTI-25105



DYNAMIC

Sensitivity	-----	50 pC/g
Measurement Range	-----	± 1000 g peak
Amplitude Nonlinearity	-----	1 %
Frequency Range ± 5%	-----	0.5 – 3.5 kHz
Resonance Frequency	-----	15 kHz
Transverse Sensitivity	-----	≤ 5 %

ELECTRICAL

Capacitance	-----	610 pF
Sensing Insulation Resistance	-----	≥ 1x10 ¹¹ Ω
Mounting Ground Insulation Resistance	-----	≥ 1x10 ⁸ Ω

ENVIRONMENT

Maximum Vibration	-----	1600 g peak
Maximum Shock	-----	2000 g peak
Operation Temperature (Domestic Ceramic)	---	-40 to 320°F/ -40 to 160°C
Temperature Response	-----	See Graph
Sealing	-----	Epoxy
Base Strain Sensitivity	-----	0.001 g/μ strain

PHYSICAL

Sensing Element	-----	Ceramic / Shear
Housing Material	-----	Stainless Steel
Output Connector / Position	-----	TNC / Top
Mounting Thread	-----	M5
Weight	-----	50 gram

ACCESORIES SUPPLIED

- Ø 4.5 mm x 1 m Coaxial Cable with TNC / BNC Connectors
- M5 – M5 Mounting Stud
- Calibration Certificate

Note: Mounting thread can be changed to English 10-32 thread by request.

