

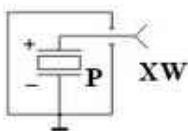
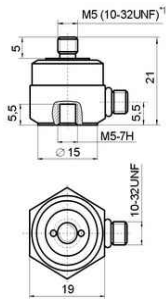


力传感器 NTIAC20, NTIAC21, NTIAC22, NTIAC23

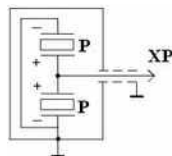
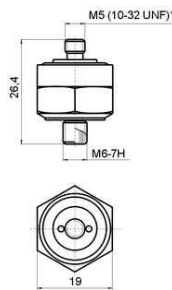


参数	单位	NTIAC20	NTIAC21	NTIAC22	NTIAC23
灵敏度.....	pC/N	2	2	4	4
量程.....	N		-1000 ... +5000		
横向灵敏度.....	%	< 5	< 5	< 3	< 5
温度响应.....	%/°C	< 0.05	< 0.05	< 0.1	< 0.05
温度范围.....	°C	-60...+200	-60...+200	-60...+150	-60...+200
电容.....	pF	20...35	20...35	200...350	10...14
阻抗.....	MOhm	> 1 000	> 1 000	> 1 000	> 1 000
固有频率.....	kHz	> 20	> 20	100	> 25
外壳材料.....	-	不锈钢 (钛)	不锈钢 (钛)	不锈钢 (钛)	不锈钢
电缆长度.....	m	-	-	2*1	-
重量.....	gram	23 (14)	23 (14)	1.6 (1)	25

NTIAC20, NTIAC23



NTIAC21



NTIAC22

