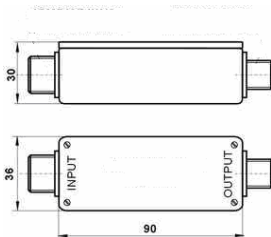




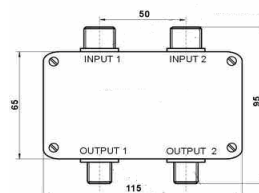
## 电荷放大器 NTIQ05-X. X. XXX

参数	单位	NTIQ05-A. X. XXX* <sup>2</sup>	NTIQ05-b. X. XXX* <sup>2</sup>	NTIQ05-B. X. XXX* <sup>2,*3</sup>
灵敏度.....	mV/pC	1; 10; 100;	0.1	
通道数量.....	-	1; 2	1; 2	1
输入量程.....	pC	13 000, 1 300, 130, 130 000	7 000...13 000, 700...1 300), 70...130, 70 000...130 000	2 400, 240, 24, 24 000
灵敏度偏离.....	%	< 1	< 1	< 1
温度范围.....	°C	(- 40...+ 85)	(- 40...+ 85)	(- 20...+ 50)* <sup>6</sup>
输出阻抗.....	Ohm	< 1 000		
频率范围.....	Hz	1...30 000		
最大输出电压.....	V	± 13	± (7 ... 13)	± 2.4
输入阻抗.....	kOhm	> 10		
电噪声.....	pC/pF mV	< 5 • 10 <sup>-6</sup> < 1	< 1	+2.5
电压源.....	V	+ (12 ± 0.5)	± (9 ... 15)	+ 9
电流源.....	mA	20	6 ... 10	10
重量.....	gram	100 (250)* <sup>7</sup>	100 (250)* <sup>7</sup>	450

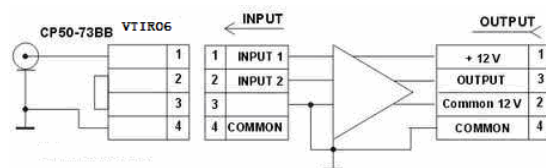
### NTIQ05-A. 1. XXX and NTIQ05-b. 1. XXX



### NTIQ05-A. 2. XXX and NTIQ05-b. 2. XXX

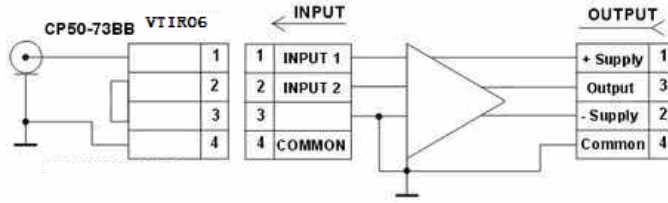


### NTIQ05-A. 1. XXX and NTIQ05-A. 2. XXX

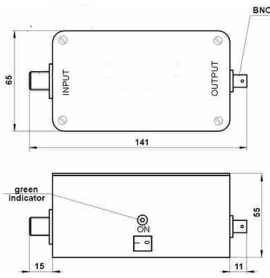




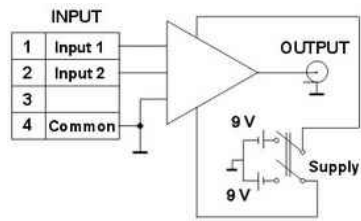
NTIQ05-b. 2. XXX



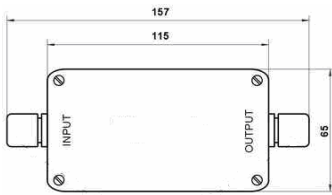
NTIQ05-B. 0. XXX



NTIQ05-B. 0. XXX



NTIQ05-B. 1. XXX



NTIQ05-B. 1. XXX

