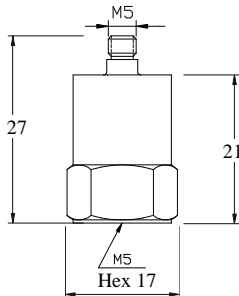




## IEPE Economic Version – M5 Output / Insulation Base

### Model NTI-13112



#### DYNAMIC

|                            |       |                  |
|----------------------------|-------|------------------|
| Sensitivity $\pm 10\%$     | ----- | 50 mV/g          |
| Measurement Range          | ----- | $\pm 100$ g peak |
| Broadband Resolution       | ----- | 0.0002 g rms     |
| Amplitude Nonlinearity     | ----- | 1 %              |
| Frequency Range $\pm 10\%$ | ----- | 0.5 – 9 kHz      |
| Resonance Frequency        | ----- | 28 kHz           |
| Transverse Sensitivity     | ----- | $\leq 5\%$       |

#### ELECTRICAL

|                                       |       |                                   |
|---------------------------------------|-------|-----------------------------------|
| Excitation Voltage                    | ----- | 18 - 30 VDC                       |
| Constant Current Excitation           | ----- | 2 – 20 mA                         |
| Output Impedance                      | ----- | $\leq 100 \Omega$                 |
| Output Bias Voltage                   | ----- | 12 VDC                            |
| Spectral Noise (10 Hz)                | ----- | 24 $\mu\text{g}/\sqrt{\text{Hz}}$ |
| (100 Hz)                              | ----- | 8 $\mu\text{g}/\sqrt{\text{Hz}}$  |
| (1000 Hz)                             | ----- | 6 $\mu\text{g}/\sqrt{\text{Hz}}$  |
| Mounting Ground Insulation Resistance | ----- | $\geq 1 \times 10^8 \Omega$       |

#### ENVIRONMENT

|                         |       |                             |
|-------------------------|-------|-----------------------------|
| Maximum Vibration       | ----- | 800 g peak                  |
| Maximum Shock           | ----- | 2000 g peak                 |
| Operation Temperature   | ----- | -40 to 248°F / -40 to 120°C |
| Sealing                 | ----- | Epoxy                       |
| Base Strain Sensitivity | ----- | 0.0008 g/ $\mu$ strain      |

#### PHYSICAL

|                             |       |                 |
|-----------------------------|-------|-----------------|
| Sensing Element             | ----- | Ceramic / Shear |
| Housing Material            | ----- | Stainless Steel |
| Output Connector / Position | ----- | M5 / Top        |
| Mounting Thread             | ----- | M5              |
| Weight                      | ----- | 23 gram         |

#### ACCESORIES SUPPLIED

- Ø 2 mm x 1 m Low Noise Cable with M5 / BNC Connectors
- M5-M5 Mounting Stud
- Calibration Certificate

Note: Output connector and mounting thread can be changed to English 10-32 thread by request.

