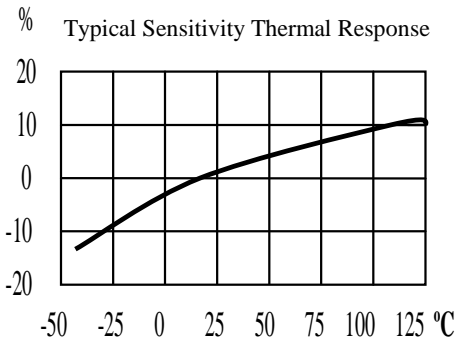
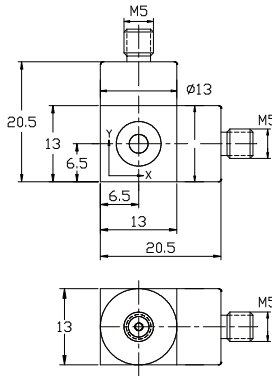




IEPE Bi-Axial Measurement Accelerometer

Model NTI-12504



DYNAMIC

| | | |
|---------------------------|-------|------------------|
| Sensitivity $\pm 5\%$ | ----- | 20 mV/g |
| Measurement Range | ----- | ± 250 g peak |
| Broadband Resolution | ----- | 0.0005 g rms |
| Amplitude Nonlinearity | ----- | 1 % |
| Frequency Range $\pm 5\%$ | ----- | 0.5 – 5 kHz |
| $\pm 10\%$ | ----- | 0.3 – 6 kHz |
| Resonance Frequency | ----- | 20 kHz |
| Transverse Sensitivity | ----- | ≤ 5 % |

ELECTRICAL

| | | |
|-----------------------------|-------|-------------------------------------|
| Excitation Voltage | ----- | 18 - 30 VDC |
| Constant Current Excitation | ----- | 2 – 20 mA |
| Output Impedance | ----- | $\leq 100 \Omega$ |
| Output Bias Voltage | ----- | 12 VDC |
| Spectral Noise (10 Hz) | ----- | $60 \mu\text{g} / \sqrt{\text{Hz}}$ |
| (100 Hz) | ----- | $20 \mu\text{g} / \sqrt{\text{Hz}}$ |
| (1000 Hz) | ----- | $15 \mu\text{g} / \sqrt{\text{Hz}}$ |

ENVIRONMENT

| | | |
|-------------------------|-------|-----------------------------|
| Maximum Vibration | ----- | 2000 g peak |
| Maximum Shock | ----- | 5000 g peak |
| Operation Temperature | ----- | -40 to 248°F / -40 to 120°C |
| Sealing | ----- | Welding |
| Base Strain Sensitivity | ----- | 0.0005 g/ μ strain |

PHYSICAL

| | | |
|-----------------------------|-------|-----------------|
| Sensing Element | ----- | Ceramic / Shear |
| Housing Material | ----- | Stainless Steel |
| Output Connector / Position | ----- | M5 / Side |
| Mounting Thread | ----- | M5 Through Hole |
| Weight | ----- | 22 gram |

ACCESORIES SUPPLIED

- Ø 2 mm x 1 m Low Noise Cable with M5 / BNC Connectors
- M5 Through Hole Mounting Screw
- Calibration Certificate

Note: Output connector and mounting screw can be changed to English 10-32 thread by request.