

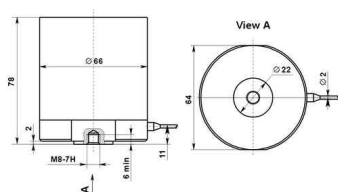


Highly Sensitive Vibration Transducers VTI46,  
NTIP47, NTIP48, NTIP49, NTIP50

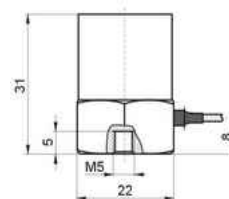


Parameter	Unit	NTIP46	NTIP47	NTIP48	NTIP49	NTIP50
Axial sensitivity (± 20 %)	pC/g <sup>*1</sup>	8,000	500	200	400	600
Relative transverse sensitivity	%	< 10	< 5	< 5	< 5	< 5
Amplitude range	g <sup>*1</sup>	±10	±200	±1000	±400	±200
Max. shock limit (peak value)	g <sup>*1</sup>	±100	±500	±2000	±800	±400
Operating temperature range	° C		-60...+150			
Frequency range (ripple ± 1dB)	Hz	5...700	5...5000	0.5...2 000	0.5...1 500	0.5...1 000
Self-resonant frequency in attached condition	kHz	> 2.5	> 15	> 6	> 5	> 4
Strain sensitivity	g • m/μm	< 0.001	< 0.001	< 0.001	< 0.001	< 0.001
Capacitance	nF	7±0.5	7±0.5	7±0.5	7±0.5	7±0.5
Insulation resistance in normal conditions	MΩ	> 1000	> 1000	> 1000	> 1000	> 1000
Design	-	Compr.	Compr.	Bending	Bending	Bending
Bottom insulation	-	yes	yes	no	no	no
Built-in cable length	m	2 <sup>*2</sup>	2 <sup>*2</sup>	-	-	-
Housing material	-	st/steel	st/steel	st/steel (titan)	st/steel (titan)	st/steel (titan)
Weight (without connector and cable)	gram	1,200	70	31 (20)	35 (21)	36 (21)

General view of  
NTIP46

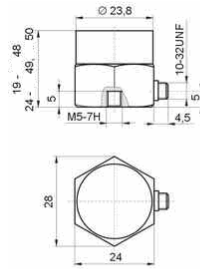


General view of  
NTIP47

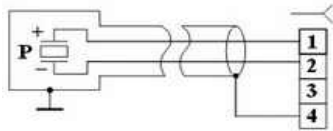




General view of NTIP48 – NTIP50



Electrical circuit of  
NTIP46, NTIP47



Electrical circuit of  
NTIP48 – NTIP50

