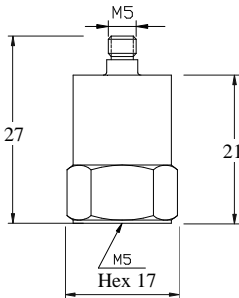




Charge Output Economic Version Accelerometer

Model NTI-24112



DYNAMIC

Sensitivity	-----	30 pC/g
Measurement Range	-----	± 1500 g peak
Amplitude Nonlinearity	-----	1 %
Frequency Range ± 10%	-----	0.5 – 7 kHz
Resonance Frequency	-----	23 kHz
Transverse Sensitivity	-----	≤ 5 %

ELECTRICAL

Capacitance	-----	700 pF
Sensing Insulation Resistance	-----	≥ 1x10 ¹¹ Ω
Mounting Ground Insulation Resistance	-----	≥ 1x10 ⁸ Ω

ENVIRONMENT

Maximum Vibration	-----	2000 g peak
Maximum Shock	-----	2500 g peak
Operation Temperature (Domestic Ceramic)	---	-40 to 320°F / -40 to 160°C
Temperature Response	-----	See Graph
Sealing	-----	Epoxy
Base Strain Sensitivity	-----	0.001 g/μ strain

PHYSICAL

Sensing Element	-----	Ceramic / Shear
Housing Material	-----	Stainless Steel
Output Connector / Position	-----	M5 / Top
Mounting Thread	-----	M5
Weight	-----	28 gram

ACCESORIES SUPPLIED

- Ø 2 mm x 1 m Low Noise Cable with M5 / M5 Connectors
- M5 – M5 Mounting Stud
- Calibration Certificate

Note: Output connector and mounting thread can be changed to English 10-32 thread by request.

