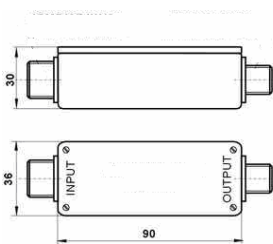




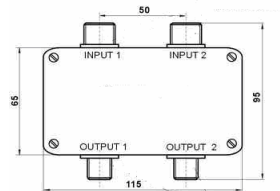
## Differential Charge Amplifiers NTIQ05-X. X. XXX

Parameter	Unit	NTIQ05-A. X. XXX* <sup>2</sup>	NTIQ05-b. X. XXX* <sup>2</sup>	NTIQ05-B. X. XXX* <sup>2,*3</sup>
Sensitivity* <sup>4</sup> (±2%)	mV/pC	1; 10; 100;	0.1	
Quantity of channels	-	1; 2	1; 2	1
Input charge range* <sup>5</sup>	pC	13 000, 1 300, 130, 130 000	7 000...13 000, 700...1 300), 70...130, 70 000...130 000	2 400, 240, 24, 24 000
Sensitivity deviation	%	< 1	< 1	< 1
(over temperature range)	°C	(- 40...+ 85)	(- 40...+ 85)	(- 20...+ 50)* <sup>6</sup>
Output resistance	Ohm	< 1 000		
Frequency range at the level -3dB* <sup>1</sup>	Hz	1...30 000		
Max output voltage (at the distortion factor < 5 %)	V	± 13	± (7 ... 13)	± 2.4
Load resistance	kOhm	> 10		
Noise	pC/pF	< 5 • 10 <sup>-6</sup>		
Output bias voltage	mV	< 1	< 1	+2.5
Voltage power	V	+ (12 ± 0.5)	± (9 ... 15)	+ 9
Current power	mA	20	6 ... 10	10
Weight	gram	100 (250)* <sup>7</sup>	100 (250)* <sup>7</sup>	450
Additional order		power unit	power unit	

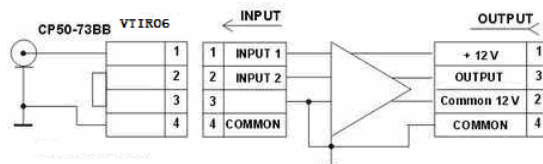
General view of NTIQ05-A. 1. XXX and NTIQ05-b. 1. XXX



General view of NTIQ05-A. 2. XXX and NTIQ05-b. 2. XXX

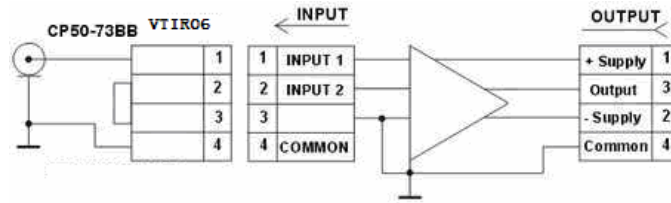


Electrical circuit of NTIQ05-A. 1. XXX and NTIQ05-A. 2. XXX

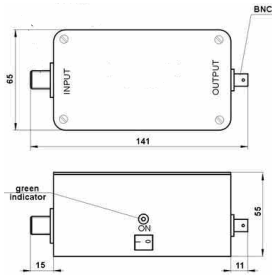




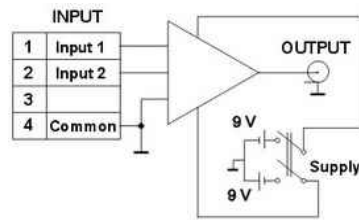
Electrical circuit of NTIQ05-b.1.XXX and  
NTIQ05-b.2.XXX



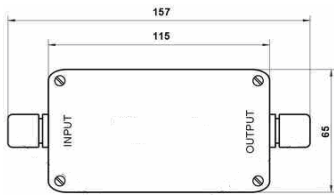
General view of  
NTIQ05-B.0.XXX



Electrical circuit of  
NTIQ05-B.0.XXX



General view of  
NTIQ05-B.1.XXX



Electrical circuit of  
NTIQ05-B.1.XXX

